



European Medical Information Framework  
**IMPROVING ACCESS**  
TO  
**HUMAN HEALTH DATA**

**DATA SETS**

- Registries and cohorts
- Primary care
- Regional record-linkage systems
- Hospital
- Administrative
- Biobanks

**RESEARCH**

- Alzheimer's**  
Identify predictors of Alzheimer's Disease (AD) in the pre-clinical and prodromal phase
- Metabolic**  
Identify predictors of metabolic complications in obesity

[www.emif.eu](http://www.emif.eu)



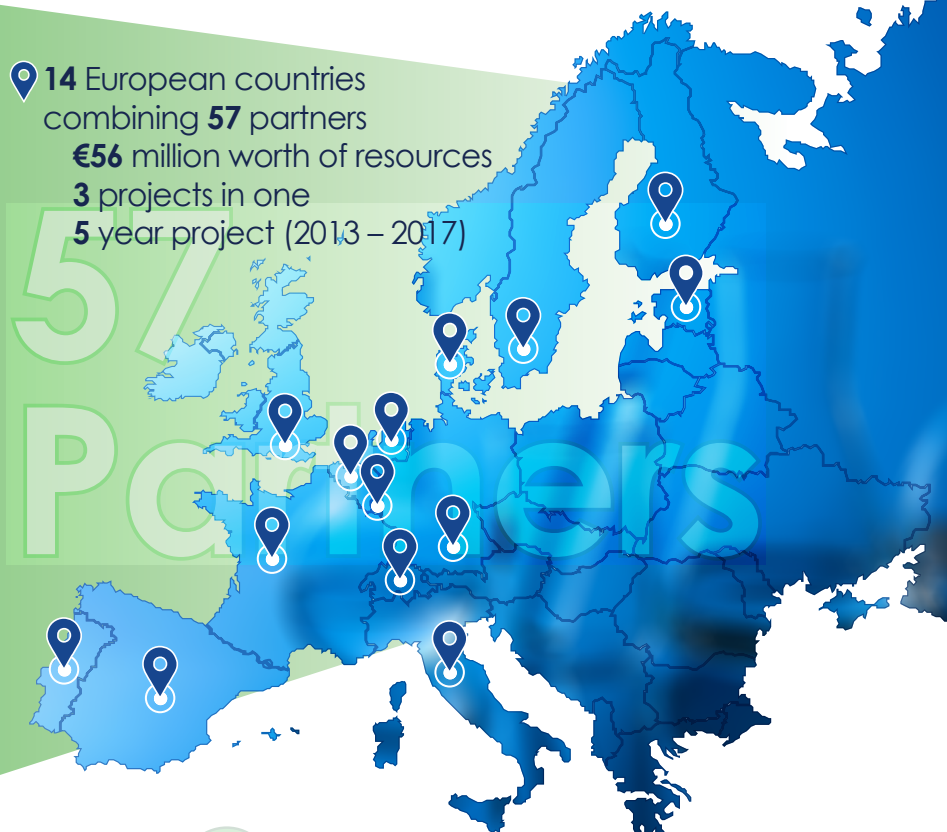
# EMIF Mission

EMIF provides tools and workflows to discover, assess, access, and (re)use human health data for improving life sciences research

📍 DISCOVER   📍 ASSESS   📍 ACCESS   📍 (RE)USE

## Project Overview

<b>ACADEMIC PARTNERS</b> 37	
<b>SME PARTNERS</b> 9	<b>EFPIA PARTNERS</b> 10
<b>PATIENT ORGANISATION</b> 1	



## EMIF Objectives

**EMIF-Platform**

A framework for evaluating, enhancing and providing access to human health data across Europe that supports EMIF-MET and EMIF-AD research and impacts how future RWE research will be done

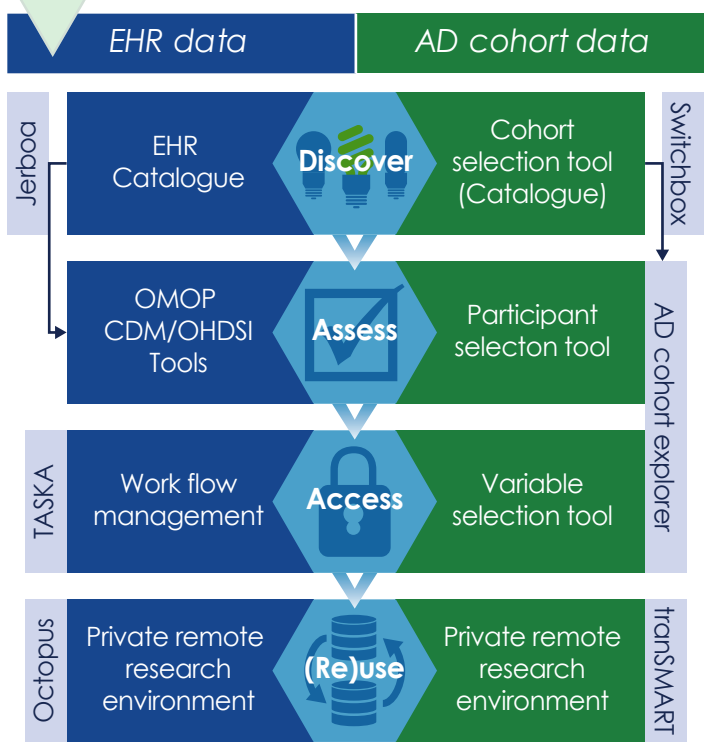
**EMIF-MET**

Identify predictors of metabolic (MET) complications in obesity

**EMIF-AD**

Identify predictors of Alzheimer's Disease (AD) in the pre-clinical and prodromal phase

## EMIF-Platform Tools



([www.emif.eu/about/platform](http://www.emif.eu/about/platform) for more information)

## EMIF General Achievements

### Dissemination

- ✓ **193 public presentations** orated on EMIF 2013–2017
- ✓ **136 scientific publications** published 2013–2017
- ✓ **74 posters presented** at conferences 2013–2017

### Collaboration

- ✓ Closely **collaborated** with OHDSI initiative on common data model and analytical toolset
- ✓ Collaborating and **partnering** with other IMI-projects: EPAD, EHR4CR, ADVANCE, eTRIKS...
- ✓ **Sharing** of tools with Dementias Platform UK

## EMIF-Platform

### Tool Development

- ✓ **EMIF Catalogue** was launched and is a data “shop window” which facilitates the reuse of electronic health record data of >62 million subjects in 15 databases ([www.emif-catalogue.eu](http://www.emif-catalogue.eu))
- ✓ The Catalogue workflow allows **data extraction, harmonization, aggregation** and **analysis** and has been used to support 16 case studies

### Common Data Model

- ✓ Adopted the **OMOP common data model** in the platform databases, unlocking its full potential towards data harmonization

### Biomarker Discovery

- ✓ Implemented **tranSMART** research environment and complementary analysis tools to support biomarker discovery in EMIF-AD and EMIF-MET

## EMIF-AD

### Tool Development

- ✓ The **EMIF AD Catalogue** holds information on 47 AD cohorts and >84 000 subjects
- ✓ The **AD Cohort explorer** allows researchers to assess AD data suitability via the cohort, patient and variable selection tools—active engagement of AD cohorts is still ongoing

### Cohort Development

- ✓ Established the **EMIF-AD biomarker discovery cohort** (1221 patients) by re-using data and multi-omics analyses on existing samples of 14 AD cohorts spread over Europe
- ✓ Established the **PreclinAD cohort** in which detailed AD phenotyping was performed in 260 cognitively normal subjects, including 196 monozygotic twins

### Biomarker Discovery

- ✓ Developed a **multi-modal approach** for biomarker discovery studies which was applied in several (sub)populations from the different cohorts

## EMIF-Metabolic

### Cohort Development

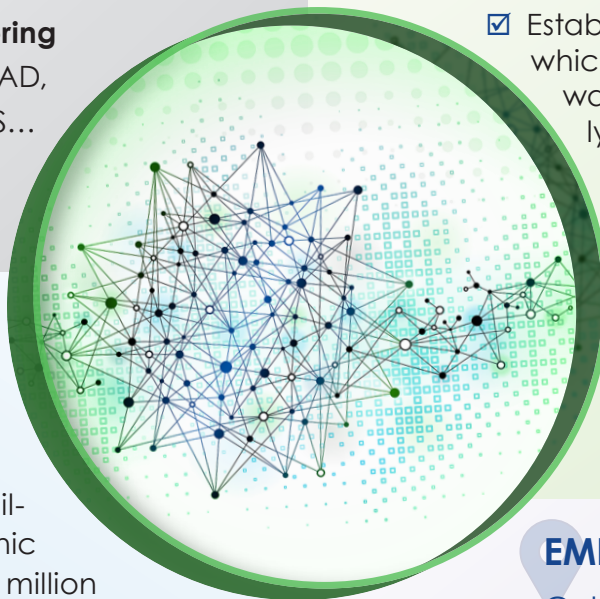
- ✓ Identified **mannose** as a novel biomarker of insulin resistance via the multi-omics biomarker discovery study. Additionally, mannose was found to identify subjects at risk of developing Type 2 diabetes and cardiovascular disease

### Natural History

- ✓ Analysis of EFPIA collaboration **accessing placebo clinical trial data** completed

### Discovery

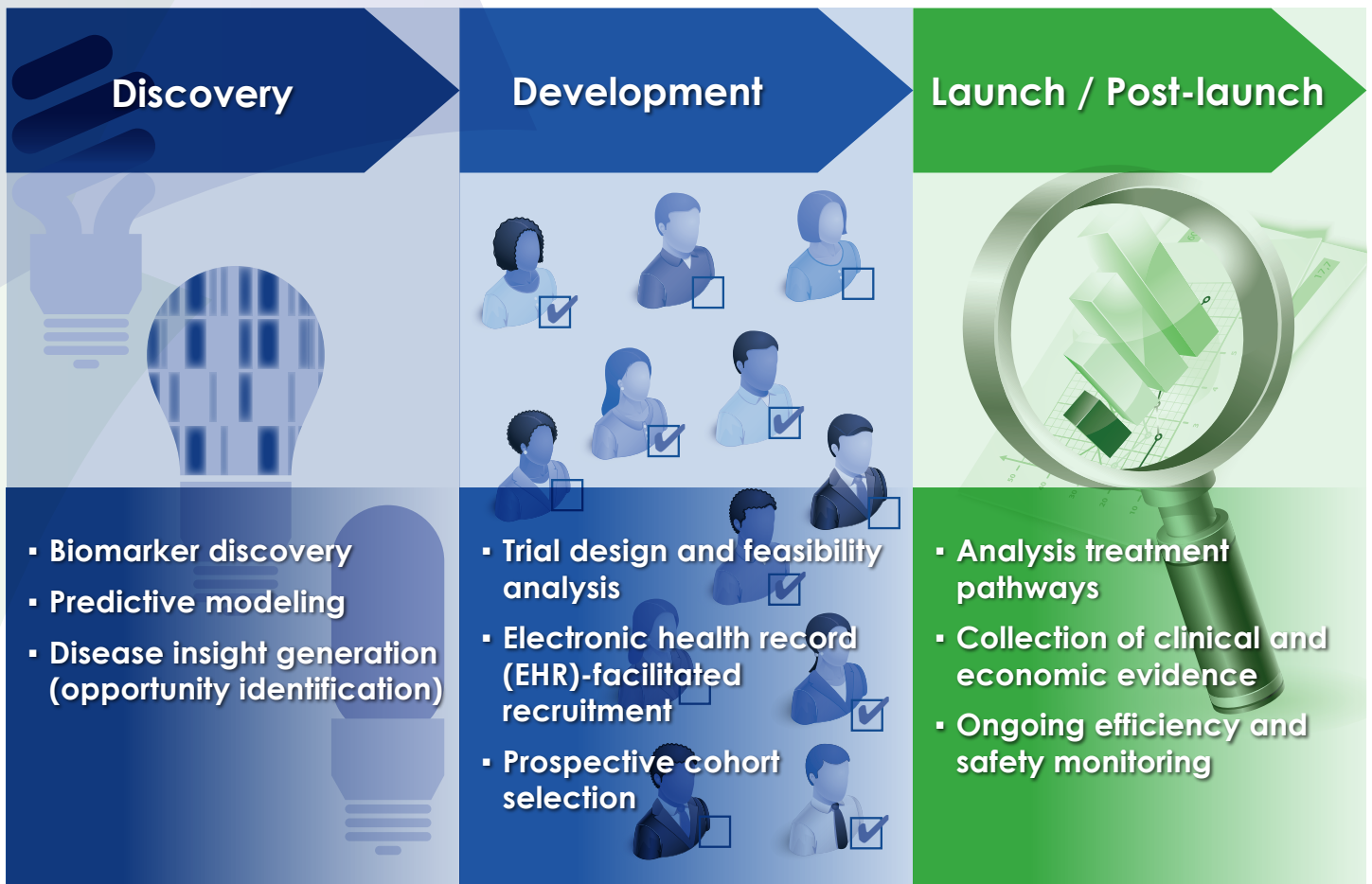
- ✓ Potential **new therapeutic target for NAFLD/NASH** under investigation in Platform databases





# Why EMIF is Needed

## Potential Applications for Real World Data in Drug Development



The research performed in this project receives support from the Innovative Medicines Initiative Joint Undertaking under EMIF grant agreement n° 115372.

These resources are composed of financial contributions from the European Union's Seventh Framework Programme (FP7/2007-2013) and in-kind contributions from EFPIA companies.



efpia



imi  
innovative  
medicines  
initiative

[www.emif.eu](http://www.emif.eu)